

Sabal Industrial Park

3829 Coconut Palm Drive

Three Office Flex Space Units Available
Total 10,000+ SF

Ideal for : Electronics Manufacturing - Lab Environment - R&D - Integrators



Property Overview

- All Spaces -Build to Suit
- Suite 130 – 2,727 SF
- Suite 140 – 4, 258 SF
- Suite 150 – 3,125 SF
- Combining Suites Possible
- 100% Generator Backup Available
- Climate-Controlled 17' High Bay Available
- Grade Entry Roll Up Doors
- Spacious Parking
- Cargo Entrance/Lot
- 100% Generator Backup Available



Leasing Contact
(727) 353-0500
(813) 485-4491
info@kvcusa.com

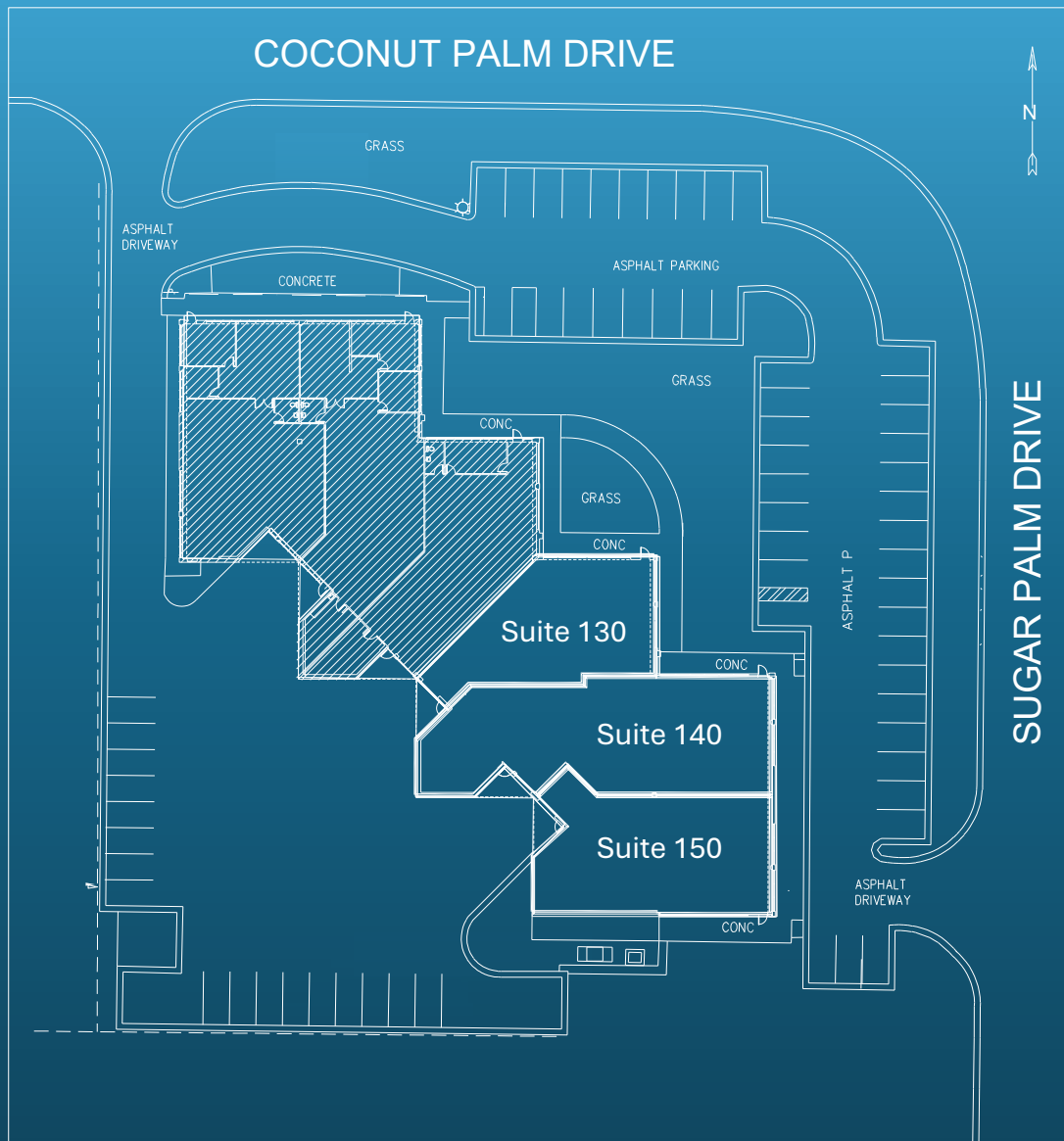
Brokers Protected

3829 Coconut Palm Drive

Three Units Available

HVAC Entire Space | Covered Entry | Ample Parking | Roll-Up Cargo Door

3.69-Acre lot with front and rear parking, cargo entrance, security surveillance, with perimeter & street lighting

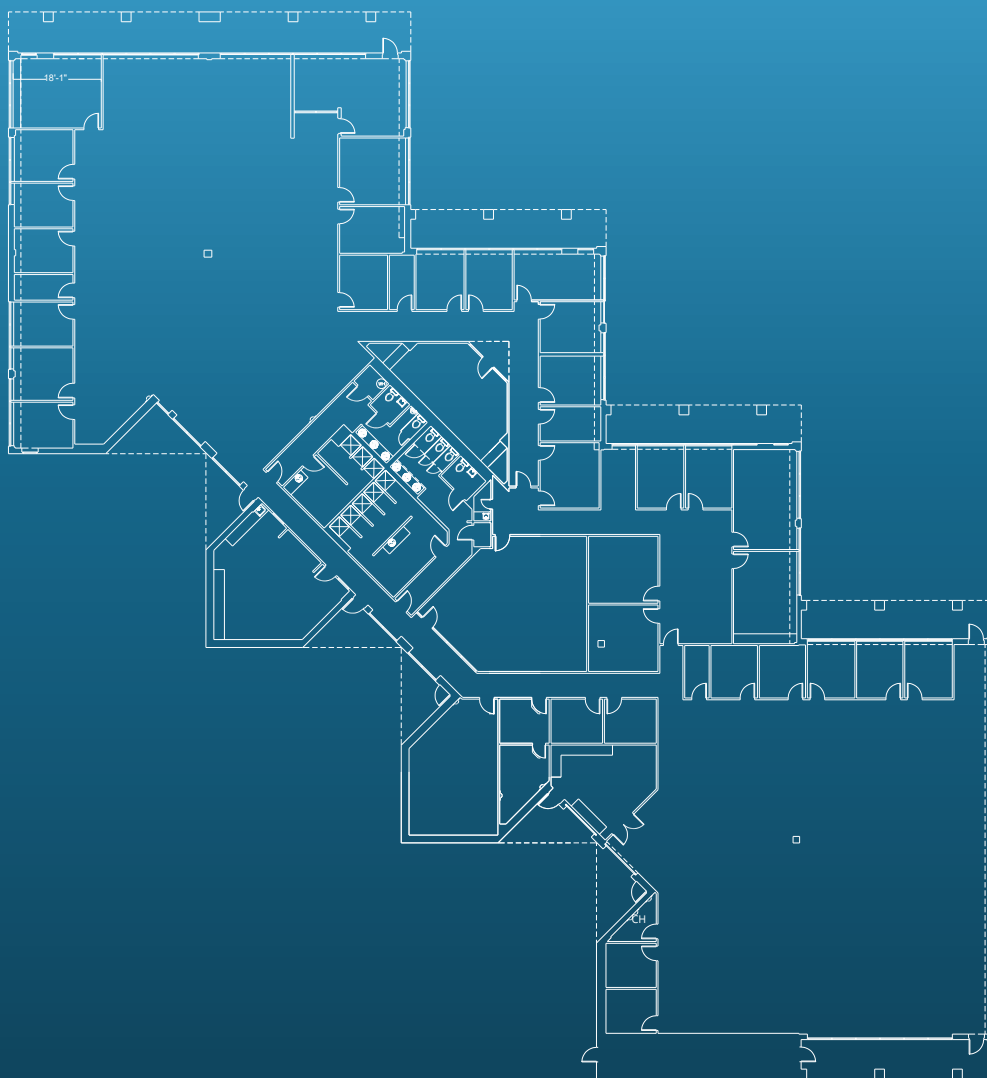


Outside area for mobile storage units available

Existing Layout

HVAC Entire Space | Covered Entry | Ample Parking | Roll-Up Cargo Door

3829 Coconut Palm Drive provides 21,340 square feet of flex space. The front entrance and front area of the suites are ideal for office space, while the rear of each space is perfect for warehouse function. There is available 17' open ceiling space, multiple 8 ft wide grade-level cargo door, and an additional pedestrian doors. This facility is fully air-conditioned throughout and includes a 100% backup generator ensuring reliability during power outages.



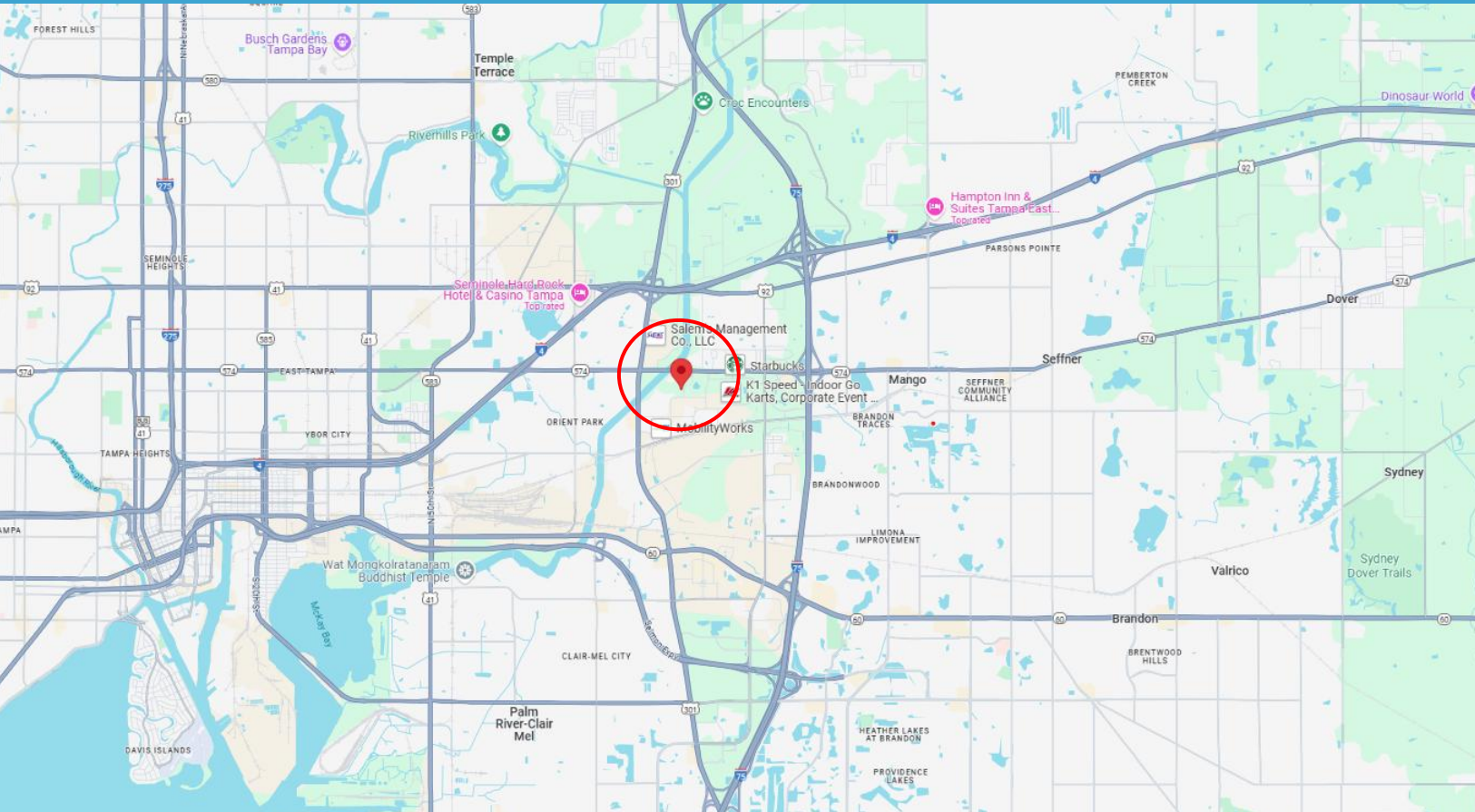
Leasing Contact
(727) 353-0500
(813) 485-4491
info@kvcusa.com

Brokers Protected

Sabal industrial park

3829 Coconut Palm Drive

Located in the Sabal Industrial Park



Discover your next business opportunity in Sabal Industrial Park! Our available spaces, each around 3,000 square feet, provide the ideal solution for companies seeking a more manageable footprint in a prime location. Unlike comparable spaces in the area, which exceed 15,000 square feet, our flexible layouts are specifically designed to meet the needs of startups and small businesses for office, warehouse, and manufacturing use. Experience the perfect blend of flexibility and accessibility that can support your growth and innovation!

Leasing Contact
(727) 353-0500
(813) 485-4491
info@kvcusa.com

Brokers Protected